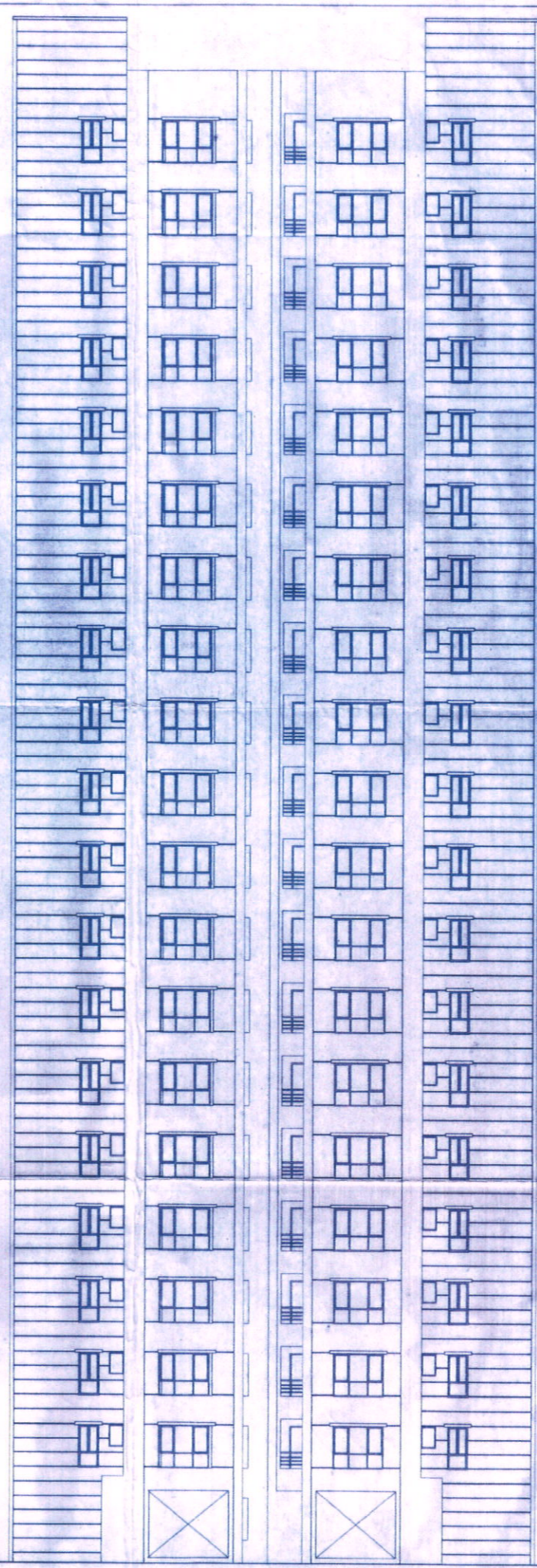


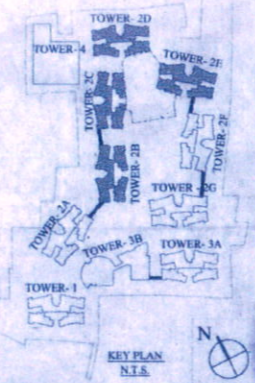
ROOF PLAN



FRONT ELEVATION

NAME OF OWNER

- NAME OF THE COMPANY**
- M/s. Adya Real Estates Private Limited
 - M/s. Aishan Supply Private Limited
 - M/s. Anchor Vanijya Private Limited
 - M/s. Anratna Advisory Private Limited
 - M/s. Anratna Dealers Private Limited
 - M/s. Anuragan Supply Private Limited
 - M/s. Aravali Hirse Private Limited
 - M/s. Arch Vanijya Private Limited
 - M/s. Arpana Consultancy Private Limited
 - M/s. Arpana Tie Up Private Limited
 - M/s. Artline Homes Private Limited
 - M/s. Artline Projects Private Limited
 - M/s. Artline Realstate Private Limited
 - M/s. Average Complex Private Limited
 - M/s. Average Infracon Private Limited
 - M/s. Average Nirman Private Limited
 - M/s. Average Projects Private Limited
 - M/s. Resuldev Enclave Private Limited
 - M/s. Basudev Housing Private Limited
 - M/s. Bluebird Tie Up Private Limited
 - M/s. Booster Heights Private Limited
 - M/s. Booster Hirse Private Limited
 - M/s. Brihmati Agami Private Limited
 - M/s. Brihmati Tie Up Private Limited
 - M/s. Cityways Vyapar Private Limited
 - M/s. Crossway Heights Private Limited
 - M/s. Crossway Nirman Private Limited
 - M/s. Gayatri Suppliers Private Limited
 - M/s. Delta Vyapar Private Limited
 - M/s. Dhanganga Hirse Private Limited
 - M/s. Dhanganga Infracon Private Limited
 - M/s. Dhanganga Realty Private Limited
 - M/s. Dhanganga Residency Private Limited
 - M/s. Dreamland Hirse Private Limited
 - M/s. Elegant Nirman Private Limited
 - M/s. Gajbadi Vinitay Private Limited
 - M/s. Gagamini Buildcon Private Limited
 - M/s. Gagamini Constructions Private Limited
 - M/s. Gagamini Hirse Private Limited
 - M/s. Gagamini Realty Private Limited
 - M/s. Gajmukhi Enclave Private Limited
 - M/s. Gajmukhi Homes Private Limited
 - M/s. Gajmukhi Infracon Private Limited
 - M/s. Gajmukhi Nirman Private Limited
 - M/s. Gajmukhi Projects Private Limited
 - M/s. Gajmukhi Realstate Private Limited
 - M/s. Ganesh Tracom Private Limited
 - M/s. Ganeshvani Promoters Private Limited
 - M/s. Green Top Nirman Private Limited
 - M/s. Guidance Vyapar Private Limited
 - M/s. Gullmarg Vyapar Private Limited
 - M/s. Hanurang Tie Up Private Limited
 - M/s. Indhar Tracom Private Limited
 - M/s. Jagmendra Distributors Private Limited
 - M/s. Jainendra Marketing Private Limited
 - M/s. Jainendra Merchants Private Limited
 - M/s. Jakhm Advisory Private Limited
 - M/s. Jakhm Tie Up Private Limited
 - M/s. Jhilmil Sales Private Limited
 - M/s. Jhilmil Vyapar Private Limited
 - M/s. Jiny Merchants Private Limited
 - M/s. Juh Marketing Private Limited
 - M/s. Kalakoti Enclave Private Limited
 - M/s. Kalakoti Homes Private Limited
 - M/s. Kalakoti Housing Private Limited
 - M/s. Kalakoti Properties Private Limited
 - M/s. Kalakoti Realty Private Limited
 - M/s. Kamyabi Consultants Private Limited
 - M/s. L'flong Enclave Private Limited
 - M/s. L'flong Hirse Private Limited
 - M/s. Linkrose Constructions Private Limited
 - M/s. Linkrose Housing Private Limited
 - M/s. Linkrose Residency Private Limited
 - M/s. Manohar Dealer Private Limited
 - M/s. Manohar Vanijya Private Limited
 - M/s. Manohar Sales Private Limited
 - M/s. Maxflow Barter Private Limited
 - M/s. Moonlife Constructions Private Limited
 - M/s. Moonlife Nirman Private Limited
 - M/s. Moonlife Residency Private Limited
 - M/s. Mridul Advisory Private Limited
 - M/s. Newwave Merchants Private Limited
 - M/s. Original Realty Private Limited
 - M/s. Panchhat Supply Private Limited
 - M/s. Pawanputra Barter Private Limited
 - M/s. Pawanputra Sales Private Limited
 - M/s. Prabhakar Barter Private Limited
 - M/s. Prajapati Commercial Private Limited
 - M/s. Prajapati Dealer Private Limited
 - M/s. Premeagar Advisory Private Limited
 - M/s. Prime Rose Marketing Private Limited
 - M/s. Radial Housing Private Limited
 - M/s. Radial Residency Private Limited
 - M/s. Rimhim Commodities Private Limited
 - M/s. Rosemary Distributors Private Limited
 - M/s. Rosemary Tie Up Private Limited
 - M/s. Sadabahar Vyapar Private Limited
 - M/s. Sagun Advisory Services Private Limited
 - M/s. Sanjvani Vanijya Private Limited
 - M/s. Sargam Vyapar Private Limited
 - M/s. Sawarg Vanijya Private Limited
 - M/s. Shivasthal Dealers Private Limited
 - M/s. Shivasthal Sales Private Limited
 - M/s. Siddha Style Barter Private Limited
 - M/s. Sidhant Suppliers Private Limited
 - M/s. Silverline Vinitay Private Limited
 - M/s. Skyline Merchants Private Limited
 - M/s. Spandan Suppliers Private Limited
 - M/s. Splendor Vyapar Private Limited
 - M/s. Style Merchants Private Limited
 - M/s. Sukhjit Vyapar Private Limited
 - M/s. Sumart Vyapar Private Limited
 - M/s. Sunshine Barter Private Limited
 - M/s. Superior Complex Private Limited
 - M/s. Superior Hirse Private Limited
 - M/s. Surchudi Advisory Private Limited
 - M/s. Sursartha Advisory Services Private Limited
 - M/s. Sursartha Consultants Private Limited
 - M/s. Swastik Barter Private Limited
 - M/s. Terapanth Consultancy Services Private Limited
 - M/s. Timeless Realstate Private Limited
 - M/s. Topten Vyapar Private Limited
 - M/s. Vidhata Advisory Services Private Limited



SCHEDULE OF DOORS & WINDOWS

| NO. | SILL | LINTEL | SIZE |
|--------|------|-------------|-------------|
| D | 2150 | 2150 | 1200 X 2150 |
| D1 | 2150 | 2150 | 900 X 2150 |
| D1e | 2300 | 2300 | 900 X 2050 |
| D2 | 2150 | 2150 | 750 X 2150 |
| D2e | 2150 | 2150 | 700 X 2150 |
| D3 | 2150 | 2150 | 1000 X 2150 |
| DW | 2400 | 2985 X 2400 | |
| DW1 | 2400 | 2345 X 2400 | |
| SD | 2180 | 2100 X 2150 | |
| SD1 | 2150 | 1600 X 2150 | |
| F.C.D | 2150 | 1125 X 2150 | |
| F.C.D1 | 2150 | 1198 X 2150 | |
| W | 350 | 2180 | 2400 X 1600 |
| W1 | 350 | 2150 | 2100 X 1800 |
| W2 | 350 | 2150 | 1200 X 1800 |
| W3 | 350 | 2150 | 850 X 1800 |
| W4 | 1100 | 2150 | 1200 X 1050 |
| W5 | 1250 | 2150 | 600 X 900 |
| W6 | 350 | 2150 | 1200 X 1800 |
| W7 | 750 | 2150 | 700 X 1400 |
| SW | 750 | 2450 | 1198 X 1700 |

CERTIFICATE OF STRUCTURAL ENGINEER
I CERTIFY THAT THE STRUCTURAL DRAWING AND DESIGN OF BOTH THE FOUNDATION AND SUPERSTRUCTURE OF THE BUILDING / BUILDINGS HAS BEEN MADE CONSIDERING THE SOIL TEST REPORT, AS PER THE RULES AND REGULATIONS MADE UNDER THE ACT AND ALSO CONSIDERING ALL POSSIBLE LOADS, SEISMIC LOAD AND THE MOMENTS GENERATED BY THE PROPOSED STRUCTURE AS PER THE BUREAU OF INDIAN STANDARD AND NATIONAL BUILDING CODE OF INDIA AND CERTIFIED THAT IT IS SAFE AND STABLE IN ALL RESPECT AND THESE PROVISIONS SHALL BE ADHERED TO DURING THE CONSTRUCTION.

SANJIV J. PAREKH
M.E. (STRUCTURAL ENGINEERING)
R.C.E., P.E. (1810624)
STRVINDIA/16/00033

SIGNATURE OF STRUCTURAL ENGINEER

CERTIFICATE OF ARCHITECT

I CERTIFY THAT ALL THE ARCHITECTURAL DRAWINGS OF THE PROJECT AT R.S. DAG NOS. 473, 474, 475, 476, 477, 478, 479, 480, 481, 482, 483, 484, 485, 486, 487, 488, 489, 490, 491, 492, 493, 494, 495, 496, 497, 498, 499, 500, 501(P), 502(P), 503(P), 504(P), 505(P), 506(P), 507(P), 509(P), 520(P), 531, 532, 533, 534, 535, 536, 537, 538, 539, 540, 541, 542, 543, 544, 545, 546, 547, 548, 549, 550, 551, 552, 553, 554, 555, 556, 557, 558, 559, 560, 561, 562, 563, 564, 565, 566, 567, 568, 569, 570, 571, NO. 24 HAS BEEN PREPARED BY ME COMPLYING WITH THE NEW TOWN KOLKATA PLANNING AREA (BUILDING) RULES, 2014. I ALSO CERTIFY THAT THE PLANS AND DRAWINGS PREPARED BY ME COMPLYING WITH ALL THE PROVISIONS REGARDING THE FIRE PROTECTION AS PER THE PREVAILING NATIONAL BUILDING CODE OF INDIA. I SHALL BE HELD RESPONSIBLE IF ANY INCORRECT INFORMATION IS FURNISHED BY ME OR ANY VIOLATION OF PROVISIONS OF THESE RULES OR THE PREVAILING NATIONAL BUILDING CODE IS FOUND IN ANY OF THE DRAWINGS AND DOCUMENTS, SIGNED BY ME AND SUBMITTED TO THE SANCTIONING AUTHORITY FOR OBTAINING SANCTION.

M. Agrawal
MORAL AGRAWAL
Regd. Architect
New Town Kolkata Development Authority
Enrollment No. AC508024100023

SIGNATURE OF ARCHITECT

CERTIFICATE OF GEO-TECHNICAL ENGINEER

IT IS CERTIFIED THAT THE COMPREHENSIVE GEO-TECHNICAL REPORT ON SOIL INVESTIGATION HAS BEEN PREPARED BY ME FOR DESIGN AND CALCULATION OF THE FOUNDATION BY ANALYZING THE SOIL SAMPLES FOR ESTIMATING THE BEARING CAPACITY OF THE SOIL ON WHICH FOUNDATION OF THE STRUCTURE WILL BE CONSTRUCTED. I SHALL ALSO CHECK THE NATURE OF THE SOIL AFTER EXCAVATION AT SITE SO THAT FOUNDATION IS EXTENDED UP TO THE APPROPRIATE DEPTH THAT HAS BEEN PROPOSED IN THE GEO-TECHNICAL REPORT.

Subir Ranjan Sarkar
Regd. Town Planner
New Town Kolkata Development Authority
Enrollment No.: TPR/JNK/D/16/00038

SIGNATURE OF GEO-TECHNICAL ENGINEER

Subir Ranjan Sarkar
Regd. Town Planner
New Town Kolkata Development Authority
Enrollment No.: TPR/JNK/D/16/00038

SIGNATURE OF TOWN PLANNER OR URBAN DESIGNER

SANJIB GUHA
BSC, BCE, P.E. (1665643)
CHARTERED ENGINEER
STRVINDIA/16/00003

SIGNATURE OF STRUCTURAL REVIEWER

TITLE
ROOF PLAN AND FRONT ELEVATION (TOWER - 2B) (TOWER - 2C SIMILAR AND 2E SIMILAR BUT ROTATED)

PROJECT
REVISED (G-II), (B+G-III) AND (G-XXX) STORED RESIDENTIAL BUILDINGS AT MOULZA - BHATENDA, R.S. DAG NOS. 473, 474, 475, 476, 477, 478, 479, 480, 481, 482, 483, 484, 485, 486, 487, 488, 489, 490, 491, 492, 493, 494, 495, 496, 497, 498, 499, 500, 501(P), 502(P), 503(P), 504(P), 505(P), 506(P), 507(P), 509(P), 520(P), 531, 532, 533, 534, 535, 536, 537, 538, 539, 540, 541, 542, 543, 544, 545, 546, 547, 548, 549, 550, 551, 552, 553, 554, 555, 556, 557, 558, 559, 560, 561, 562, 563, 564, 565, 566, 567, 568, 569, 570, 571, NO. 24 HAS BEEN PREPARED BY ME COMPLYING WITH THE NEW TOWN KOLKATA PLANNING AREA (BUILDING) RULES, 2014. I ALSO CERTIFY THAT THE PLANS AND DRAWINGS PREPARED BY ME COMPLYING WITH ALL THE PROVISIONS REGARDING THE FIRE PROTECTION AS PER THE PREVAILING NATIONAL BUILDING CODE OF INDIA. I SHALL BE HELD RESPONSIBLE IF ANY INCORRECT INFORMATION IS FURNISHED BY ME OR ANY VIOLATION OF PROVISIONS OF THESE RULES OR THE PREVAILING NATIONAL BUILDING CODE IS FOUND IN ANY OF THE DRAWINGS AND DOCUMENTS, SIGNED BY ME AND SUBMITTED TO THE SANCTIONING AUTHORITY FOR OBTAINING SANCTION.

ARCHITECTS
AGRAWAL & AGRAWAL
BARODA KOLKATA

| SCALE | DATE | SHEET NO. | DEALT | CHECKED |
|-------|----------|-----------|-------|---------|
| 1:100 | 06.12.16 | 19 OF 41 | SUIP | SHLA |

[Signature]
Authorized Signatory

SIGNATURE OF OWNER

3/24/18
 3/24/18
 3/24/18

Handwritten signature and date
 3/24/18

SACTIONED 1 APPROVED

New Town Kuala Lumpur Development Authority

Chief Architect

New Town Kuala Lumpur Development Authority

Assistant Architect

Handwritten signature and date
 3/24/18

Note: - The project is recommended for approval subject to the following conditions:
 1. The project shall be completed by the end of 2018.
 2. The project shall be completed in accordance with the approved plans and specifications.

Building Particulars: Plot area 10.0000 Ha (24.71 Acre) (GFA 11,170 Sqm) (GFA 11,170 Sqm) (GFA 11,170 Sqm)

Date: 30.07.2018

Memorandum No. 3622 (3) / UKDA / PRC-043 / 2014

NEW TOWN KUALA LUMPUR DEVELOPMENT AUTHORITY

Sanction of local plans for construction purposes

The architect has been issued on the basis of the information provided and does not warrant the accuracy or completeness of the information provided. The architect is not responsible for any errors or omissions in the information provided. The architect is not responsible for any costs incurred in connection with the preparation of the information provided.

STRUCTURAL DRAWINGS, STRUCTURAL REPORTS AND SOIL TEST REPORTS ARE NOT CHECKED AND SEPT FOR RECORDS ONLY.

| | |
|---|-------------------------------------|
| ARCHITECT: HONG HON YEN | Registration No: R001101/00030 |
| CIVIL/STRUCTURAL ENGINEER: TAN JI U | Registration No: STGR/UKDA/10/00030 |
| SEO TECHNICAL ENGINEER: M. HANIFFA M. T. R. | Registration No: STGR-M10/09/00010 |
| TOWN PLANNER/URBAN DESIGNER: TAN JI U | Registration No: TFR/UKDA/10/00030 |
| STRUCTURAL ENGINEER: TAN JI U | Registration No: STR/UKDA/15/00013 |